



1/40

3/2/1940/ 1

COMMISSIONE EDILIZIA

RIBERA.

Il sottoscritto chiede a questa Commissione Edil,  
l'autorizzazione a poter demolire e ricostruire la  
propria casa posta in via Pellegrini n. 74.

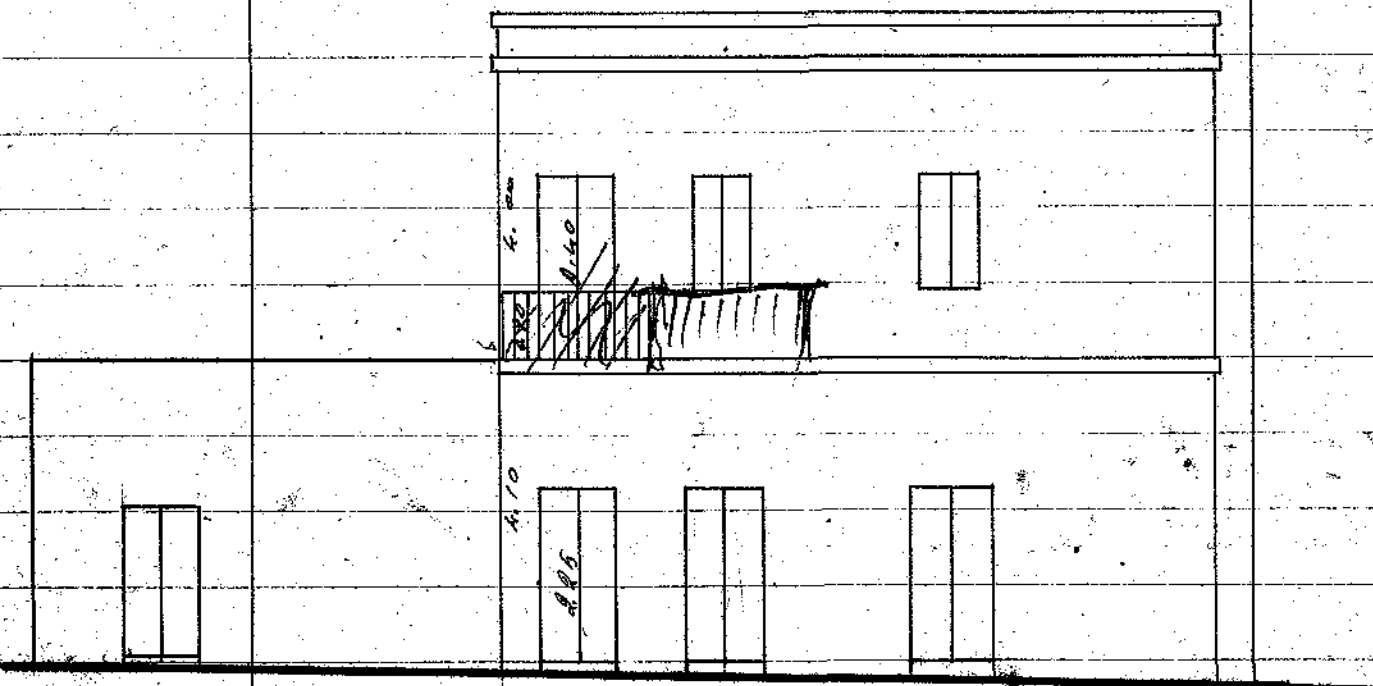
Unisce pertanto in duplice copia i relativi disegni

Ribera, 27/1/1940. XV111

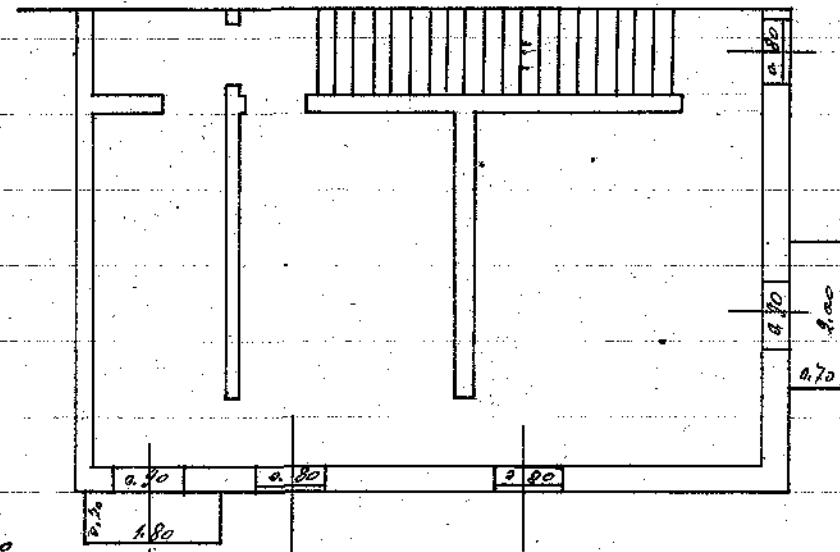
*Alfano Scimozza*

02/11

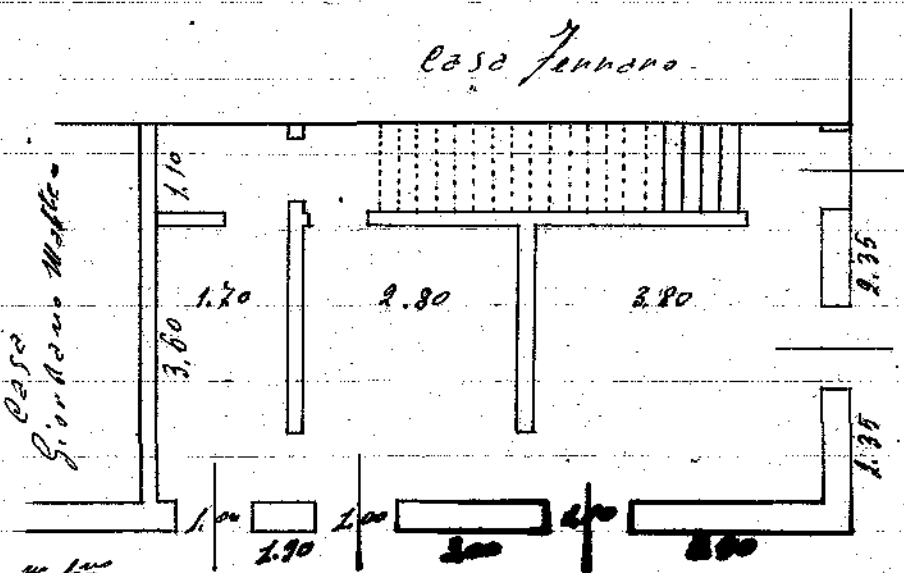
Scale  $\frac{1}{100}$



Via Pellegrini



p. I.



p. II.

Via Pellegrini

Alber. 27-1-1440 XVIII

Gen. Michele...

Via Pellegrini

una h d. 0.20 esterna = 0.20  
 2.20 h d. 0.19 = 2.80  
 A = 4.00

pianerottolo p. I. h. 0.20  
 port. p. I. h. 0.20 = 4.20  
 L = 4.20